

# NYPAN

The Nypan has a smooth action extending mechanism which allows each glass leaf to glide into position. The design is contemporary and practical.

The glass tabletop and leg frames are available in a range of Swanky Design colours and effects.

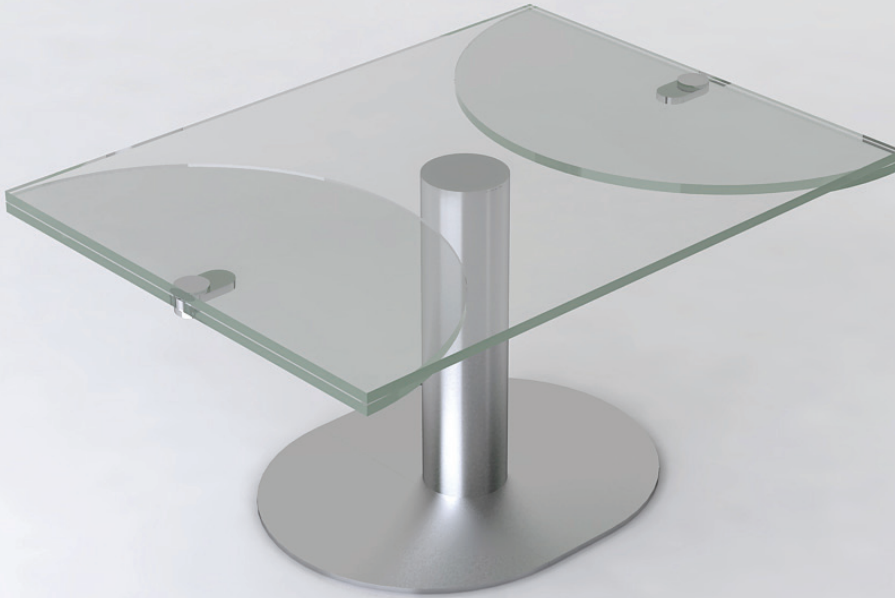
The leg frame is UV bonded to the glass top. The UV bond has been laboratory tested and meets a very high standard of 450kg shear pressure per leg. Glass table top corners are rounded for safety.

Materials used are environmentally friendly. The table has been designed so it is simple to assemble. Each table is stamped with the Swanky Design Logo. Made In England.

The mechanism within the table is manufactured through precision engineering where tolerances are within 10 microns to ensure a smooth and quality movement.

All glass is Toughened Safety Glass and conforms to British Standards BS 6206 which is recognised worldwide.

**Finishes goto** <http://www.swankydesign.com/IndoorFinishes.php>



## DIMENSIONS

L: 80cm - 140cm, W: 60cm , H: 40cm

Link to movie to view mechanism movement

<http://www.swankydesign.com/productmovies.php>

